

Poly-Plus

The ORIGINAL Rackham Poly-Plus Panel offering a thermally efficient floor where either NO membrane or a very light gas membrane (1200 gauge or less) is required.

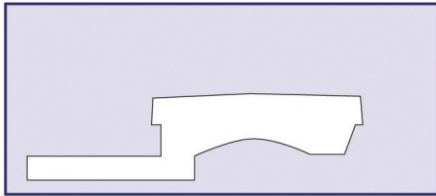


Fig 1. Poly-Plus original panel

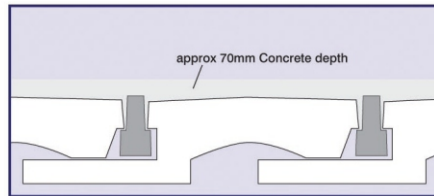


Fig 2. Floor construction using Poly Plus panel with NO membrane

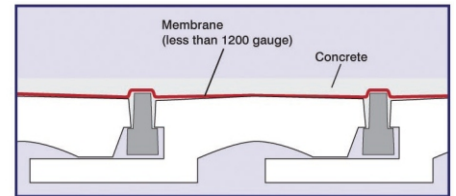


Fig 3. Floor construction using Poly-Plus panel with membrane barrier

F/T Flat Top

Where site conditions require a Radon or gas membrane (over 1200 gauge) please use the F/T Flat Top panel.

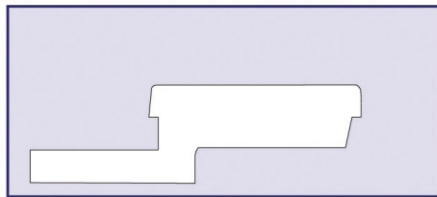


Fig 4. F/T Flat Top panel

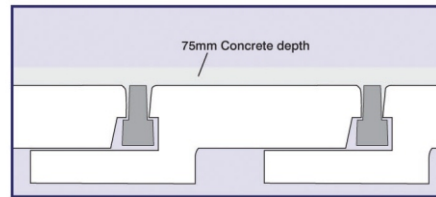


Fig 5. Floor construction using F/T Flat Top panel with NO membrane

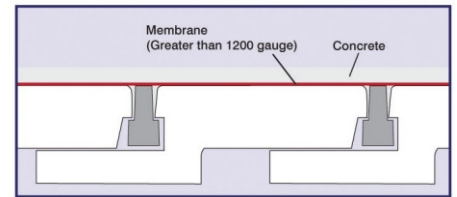


Fig 6. Floor construction using F/T Flat Top panel with rigid membrane barrier

F/T EXTRA, F/T PREMIUM AND F/T PREMIUM PLUS

With “u” values as low as 0.08W/m²K for even the smallest houses

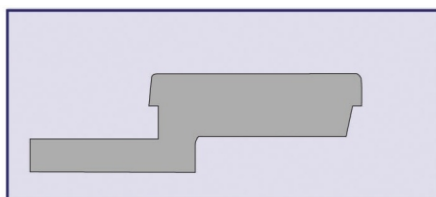


Fig 7. F/T EXTRA, F/T PREMIUM OR F/T PREMIUM PLUS panel

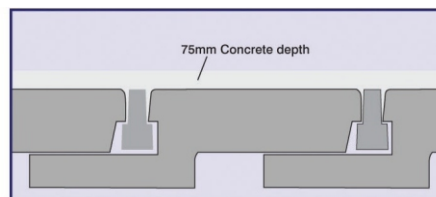


Fig 8. Floor construction using the F/T panels with NO membrane

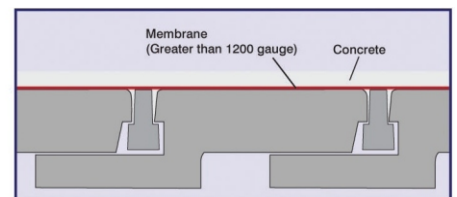


Fig 9. Floor construction using the F/T panels with rigid membrane barrier

The structural concrete screed laid over the polystyrene panels should be a minimum 50mm thick **above the top of the beam** (overall depth approx 70mm) when using the Poly-Plus panels or 75mm thick when using any of the F/T panels. The concrete should be grade 25 with a maximum aggregate size of 10mm and reinforced with either polypropylene fibres or A142 mesh.

Where RADON or GAS barriers are required, BBA Certified products should be used and installed in accordance with the appropriate certificate.

Full details and specification of the Poly-Plus system can be found in our BBA Agreement Certificate

Poly-Plus panels to suit your site requirements